

# Forest, Field, and Flower

**BY CULTIVATING OUR SENSES** and engaging with the natural world in all its splendor — and occasional discomfort — we experience a deeper understanding of our place in the world and the consequences of our actions. We see ourselves as players, not mere bystanders, in the global scheme, and we glimpse beauty more profound than our machines and inventions.

My path has crisscrossed Massachusetts since childhood: from the remnants of an apple orchard in Brookfield to the Connecticut River flowing past Hatfield's alluvial plains; from the thick forests of the Holyoke Range to the shores of Cape Cod. The diverse beauty of my native landscapes comprises much of my inspiration.

I am equally drawn to life teeming in the smallest places, deep within my gardens and backyard. Every inch of soil or lawn is jam-packed with interacting, moving pieces: buzz of a beetle, scent of a marigold, prick of a rosebush, delicate butterfly wing. I seek out and celebrate these tiny lives and spaces.

Through nature's odd angles, random patterns, and curious juxtapositions, I divine the magic and mystery of what it means to be alive.

—

*Russell Steven Powell, January 2024*



THE ROAD HOME, acrylic on canvas, 40x30, \$765



WINTER RIVER SUNSET, oil on  
canvas, 36x24, \$765





MIGRATORY PATTERNS, oil on canvas, 30x24,  
\$625



CITY LINE, acrylic on canvas, 30x24, \$575

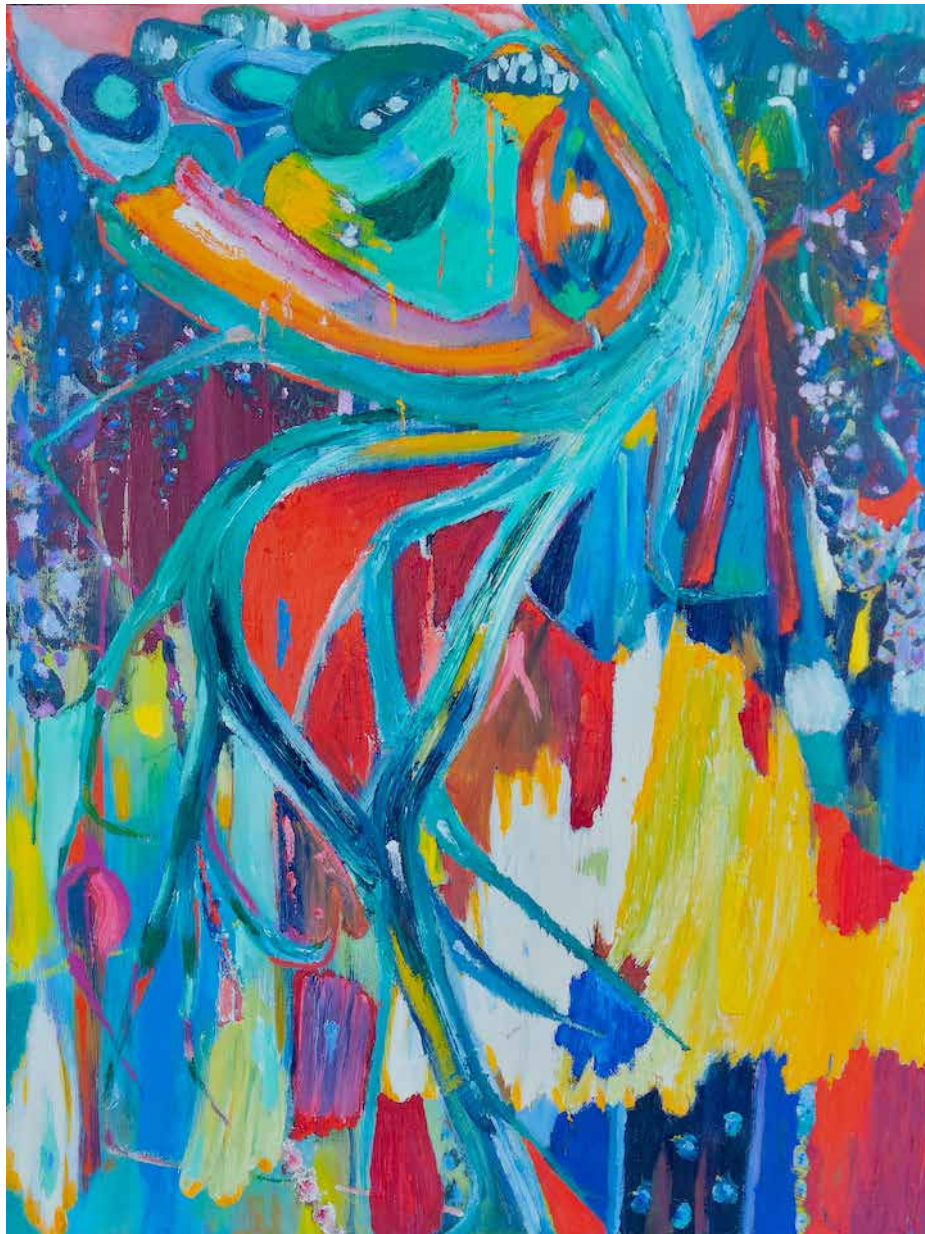


MOUNTAIN ROAD, DECEMBER, acrylic on  
canvas, 16x20, \$425





MOUNTAIN RANGE, acrylic on  
canvas, 20x16, \$325



THE MEADOWVERSE, oil on canvas, 40x30, \$975





FIVE PODS, acrylic on canvas, 24x18, \$420



ANT'S EYE, oil on canvas, 24x36, \$765



ORANGE COSMOS, watercolor on paper, 14x20,  
(framed) *sold*

*All frames by Jonathan A. Wright*





COLLECTING SEEDS, acrylic on canvas, 20x16, \$325



BIOTA, OCTOBER, oil on canvas, 36x48, \$1,295

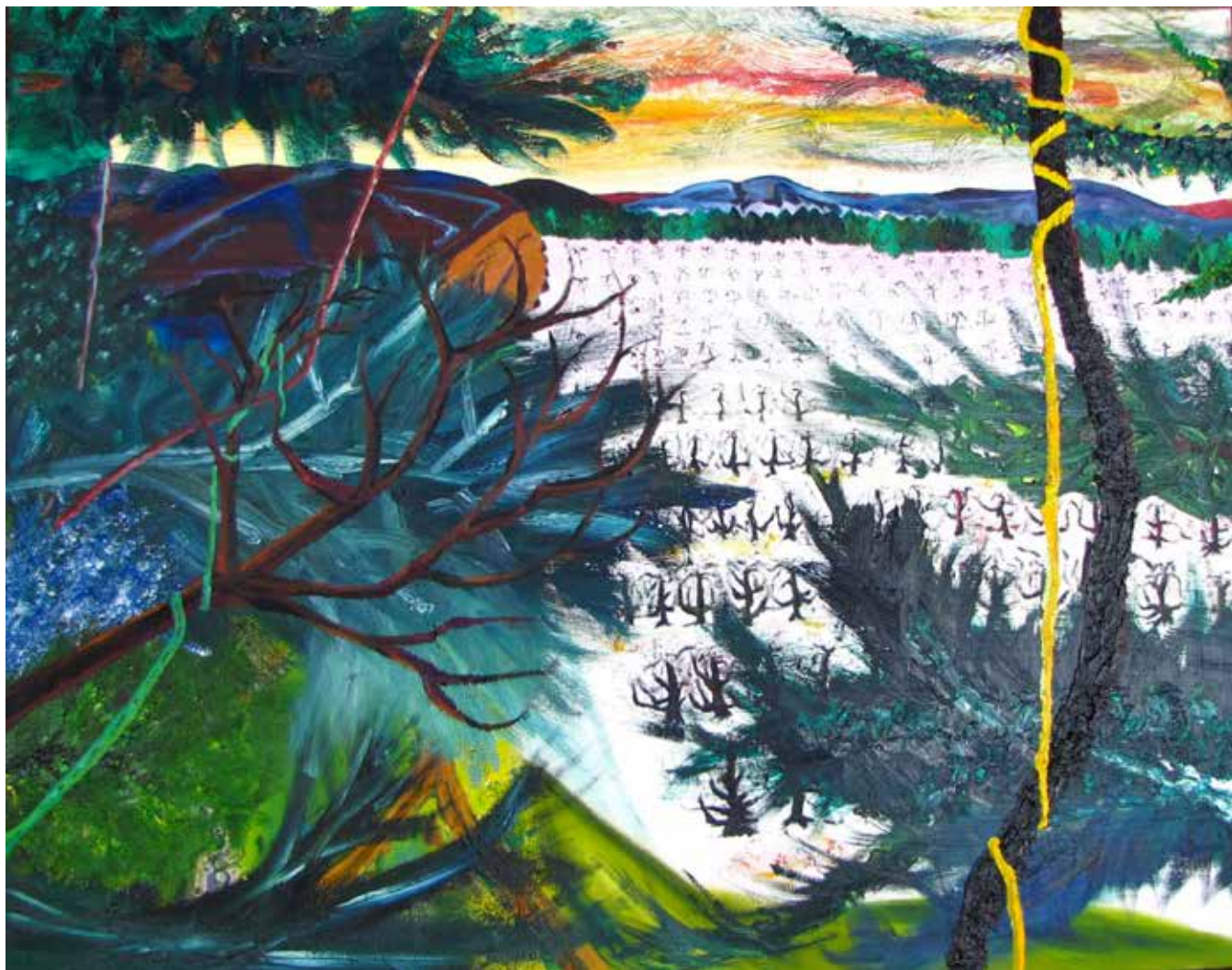


OCTOBER'S FLOWERS, acrylic on canvas, 16x20,  
\$325





SPENT BLOOM, watercolor on paper, 11x15,  
\$375 (framed)



ORCHARD OVERLOOK, oil on canvas, 48x60, \$2,875 (framed)



CONNECTICUT RIVER, DAWN,  
watercolor on board, 4x6, \$225  
(framed)





DEEP WOODS, acrylic on canvas, 36x24, \$765



TOMATOES AND SQUASH, oil on canvas, 24x36, \$675

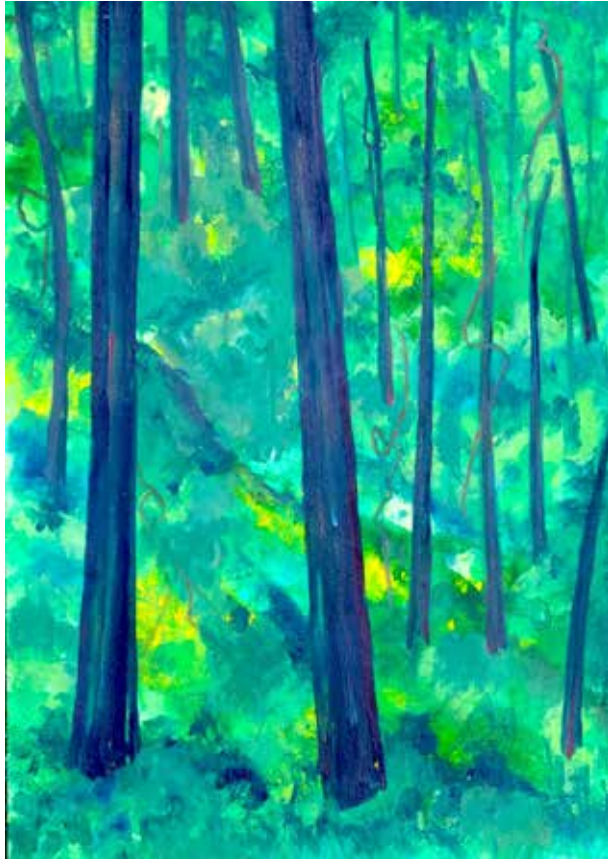


TRAIL LEAVES, oil on canvas,  
30x20, \$575





OAK, acrylic on canvas, 18x24, \$420



TRAIL TREES, watercolor on paper,  
20x14 (framed), *sold*



WETLAND, acrylic on canvas, 24x18, \$420





BUBBLING OVER, acrylic on canvas, 20x16,  
\$325



BUBBLING UNDER, acrylic on canvas, 16x20, \$325



ROSE HIP, watercolor on paper, 20x14, \$395 (framed)





DUNE SANDS, watercolor on  
paper, 20x14, \$395 (framed)



FOLDING SCREEN, acrylic on panel, spalted birch frame by Jonathan A. Wright, approx. 60"x54", \$1,900

